



Powerful.
Loading system
MFPU.

Dust-free loading. **Easy operation.**

The loading system MFPU is used for rapid, dust-free loading of vehicles with flour, semolina or bran from silos.

The loading system MFPU parts in contact with product are made of stainless materials and the food-appropriate plastics meet international standards for hygienic design.

Different working modes.

The loading system MFPU is used for both closed and open loading. In both variants, the system is operated using the control pendant. The discharge cone sits on the opening of the tanker vehicle to create a closed connection. The fill

indicator, installed in the discharge, stops the loading once the vehicle is full. Minimal travel provides sufficient lifting of the closed system above the tanker.

In the open loading variant, the discharge of the loader rests on the bulk material cone. The fill indicator lifts the discharge automatically as the bulk material level rises. The minimum travel is longer. This allows it to reach as far as possible into the open truck. For maximum flexibility, the loading bellows is also available with a longer travel.

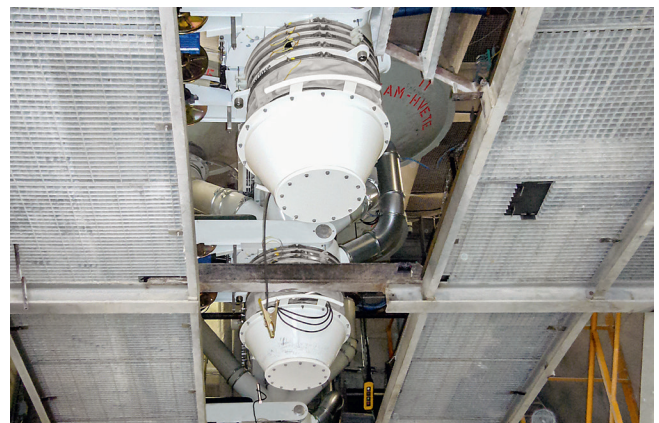
The closed loading variant is equipped with an infeed diameter of 300 mm. Two options are available in the open loading variant: 300 mm or 400 mm. Both are connected to a central aspirator. An integrated filter is also available for closed loading. All variants can be integrated into our WinCos system controller.

Advantages at a glance.

- High loading throughput
- Easy to operate
- Hygienic design
- Robust construction
- Optional integration into the WinCos system controller



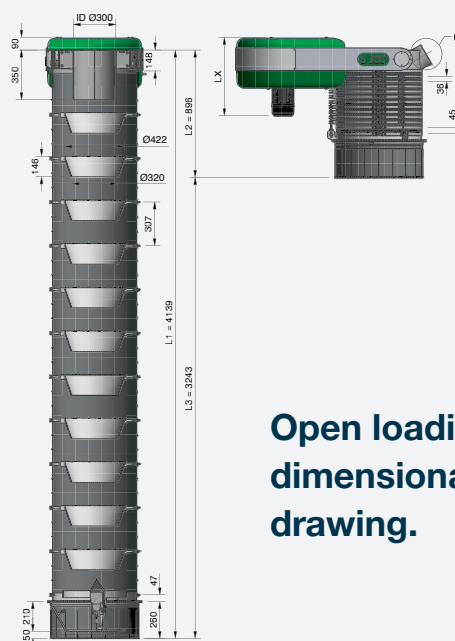
Open loading: as the bulk material cone rises, the discharge automatically lifts.



Closed loading: The system is operated using the control pendant.

	MFPU-S300 TS	MFPU-F300 TS	MFPU-S300 FX	MFPU-S400 FX
Bulk material	Flour / semolina	Flour / semolina	Bran / pellets	Bran / pellets
Type of loading	Tanker truck, closed	Tanker truck, closed	Flatbed truck, open	Flatbed truck, open
Loading throughput in m³/h *	max. 250	max. 250	max. 250	max. 440
L2 mm (retracted)	1274	1444	896	1015
L3 mm (extended)	1829	1837	3243	3144
Integrated filter	No	Yes	No	No
Inlet	DN 300	DN 300	DN 300	DN 400
Loading bellows with food application approval	Standard	Standard	Optional	Optional
ATEX	Optional	Optional	Optional	Optional

**Closed loading
dimensional
drawing.**



Open loading dimensional drawing.

MFPU en 01/18 ZACC

Bühler AG

CH-9240 Uzwil
Switzerland

T +41 71 955 11 11
F +41 71 955 66 11

buhlergroup.com