



Keep an eye on your machine, foundry and plant with the Bühler Insights Die Casting Dashboard which shows real-time data customized for you.

The Die Casting Dashboard is an invaluable tool, enabling an overview of key process data like temperature, biscuit size and critical pressure. All data is captured and available to improve maintenance, quality auditing and performance benchmarking.

Benefits

Higher availability – always have an eye on your die-casting cells

Continuous improvement – thanks to data transparency

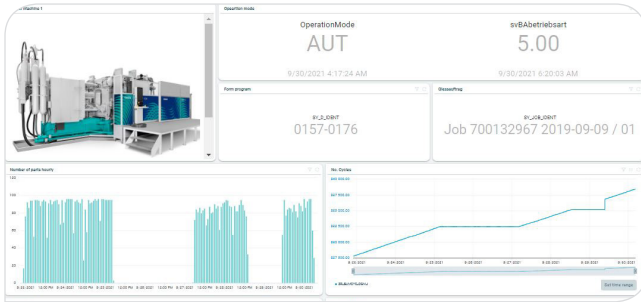
Economic solution – for your machine or entire plants

Secure connection – by using the Bühler Insights platform



Taking a closer look at the Die Casting Dashboard.

Real time information.



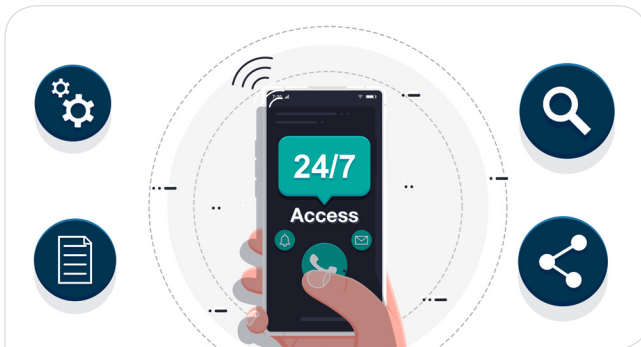
The Böhler Insights Die Casting Dashboard provides customized information, depending on your needs, thereby giving insights for decision-making at every level.

Trend and performance data.



Data is recorded over time to give you the opportunity to benchmark performance and to compare across machines, foundries and plants.

The start of your digital journey.



The Die Casting Dashboard introduces you to the digital world of Böhler die-casting technology. An affiliated mobile application is flexible, accessible 24/7 and keeps you always informed.

Secure data handling.



Böhler Insights system is certificated with the most respected cyber security standard: ISO 27001:2013. Supported by Böhler Insights, all of your data is encrypted and saved in a dedicated system with the highest availability and security.

Prerequisite:

Your machine should have Böhler Insights gateway, IoT edge, access to the internet, and DataView/DataNet (Singlemaster)

Lead time:

If you have a Böhler Insights connected foundry, the Die Casting Dashboard can be connected within one day. For a foundry that is not connected to Böhler Insights, delivery time upon request.

Böhler AG

Die Casting Service
CH-9240 Uzwil, Switzerland
dc.support@buhlergroup.com T +41 71 955 34 45
www.buhlergroup.com/die-casting F +41 71 955 66 55

