

Bühler Services
Partnering for better outcomes

Temperature and Vibration Management (TVM) Gen2

No subscription needed

Grinding is at the heart of flour milling and is a critical step regarding final product quality. In order to optimize your grinding process, advanced insights into operational performance are needed.

TVM provides real-time insights into your grinding processes, offering data-driven understanding for improved performance. Its transparent and investigative features enable informed decisions and early detection of operational issues, promoting safe and reliable grinding for consistently high-quality end products.

Bühler's Temperature and Vibration Management (TVM) includes:

- Automated temperature imbalance detection
- Alarms & notifications for extreme temperatures and events
- Real-time and historic temperature & vibration data visualization
- Seamless integration within the Mercury MES ecosystem for an all-in-one experience

Availability:

- Available for all Bühler roller mills, new or as retrofit*
- Third-party roller mill integration upon request

*Some conditions apply

Benefits



Optimize production

- Real-time operations monitoring
- Fast detection and response to temperature imbalance events
- Energy cost optimization



Ensure quality

- Consistent product quality
- Increased operational and production stability
- Reduction of waste through precise temperature control



Increase transparency

- A panoramic view of grinding performance
- Advanced analysis and insights into temperature and vibration information

Ready to transform your business?

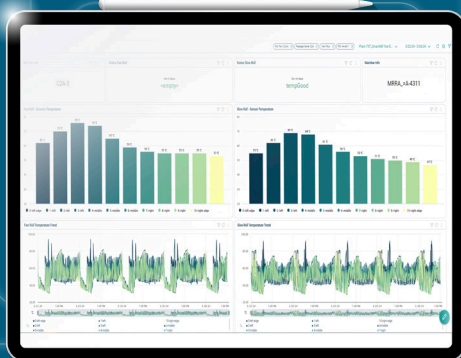
Contact your local Bühler representative or
get in touch with us at:
milling@buhlergroup.com



Discover the unmatched benefits TVM brings to your process!

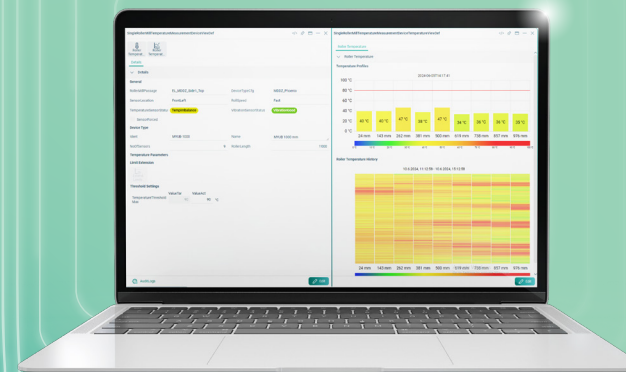
Bühler Services
Partnering for better outcomes

Real-time insights for superior grinding

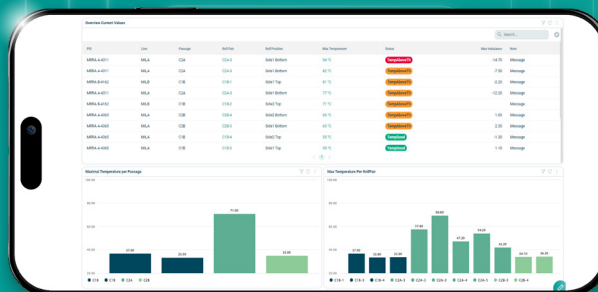


- Real-time overview of roll temperatures for optimal control
- Improved transparency and early detection of grinding issues

Seamless integration with plant automation for efficient workflows



Fast indications for rapid adjustments



- Holistic overview of all roller mills' performance
- Deep dive into specific passages for targeted insights

- Operational synergies are ensured thanks to the fluid implementation of TVM into Mercury MES*
- Explore individual rollers' performance with a single click

*Some conditions apply