

MontBlanc – optimum speed, minimum energy

Bühler Insights



MontBlanc

Smooth performance with increased efficiency

The MontBlanc fan optimization system is a part of Bühler's advanced process control technology designed to enhance sustainability and improve efficiency, maintaining consistent malt quality. By precisely controlling the fan speed, the system ensures energy savings and can contribute to extended equipment life. Additionally, by dynamically adjusting to the process demands, the system helps maltsters reduce their carbon footprint, making the malting process more environmentally friendly.

Electrical energy savings
by up to **20%**

Physics

- Power ~ (fan speed)
- Air volume ~ (fan speed)
- **More efficient to run 10% longer at a 10% lower speed**
- **-19% electricity**

Plant logistics

- Strict production schedule
- **With our algorithm we do look into the future, minimize waiting times and control fan speed to maximize efficiency**

Process know how and AI



- Drying time depends on batch size, moisture of green malt and environmental conditions
- **Our AI algorithm predict the drying time before a batch starts**

Services designed for your needs.

You know your business better than anyone. Combining our engineering expertise, industry know-how and practical skills with your knowledge, we can give you the best tailor-made support for your business.



Bühler Insights for maltsters

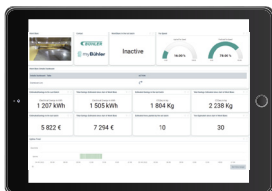
Your invisible daily support

The industry-leading Bühler Insights enables full transparency of data and processes, providing a detailed process history for maltsters that is accessible from anywhere at any time, and which can be filtered by step, job, or recipe.

Bühler Insights also enables easy root cause analysis and comparison between different jobs and batches, while Bühler Insights Replay is able to provide a detailed visual display of the full production traceability for any unexpected issues. A customized dashboard allows you to choose the data you need, and display it as per your preferred visualization. You may also customize how and when you would like to receive notifications, giving you complete control over your plant.

MontBlanc

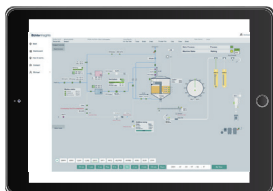
MontBlanc ensures your process time is used in the most efficient way possible, guaranteeing a smooth performance and increasing the overall efficiency of your plant. Reducing the kiln fan speed can generate savings of up to 25% during the withering phase, significantly cutting CO₂ emissions.



Replay

Analyze the process history at any point back from today - just like pressing rewind on a media player.

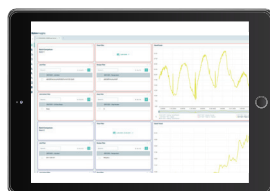
Increase your product understanding and protect your business with a full digital production history.



Trend comparison

In the future you will also be able to compare two different batches with one click.

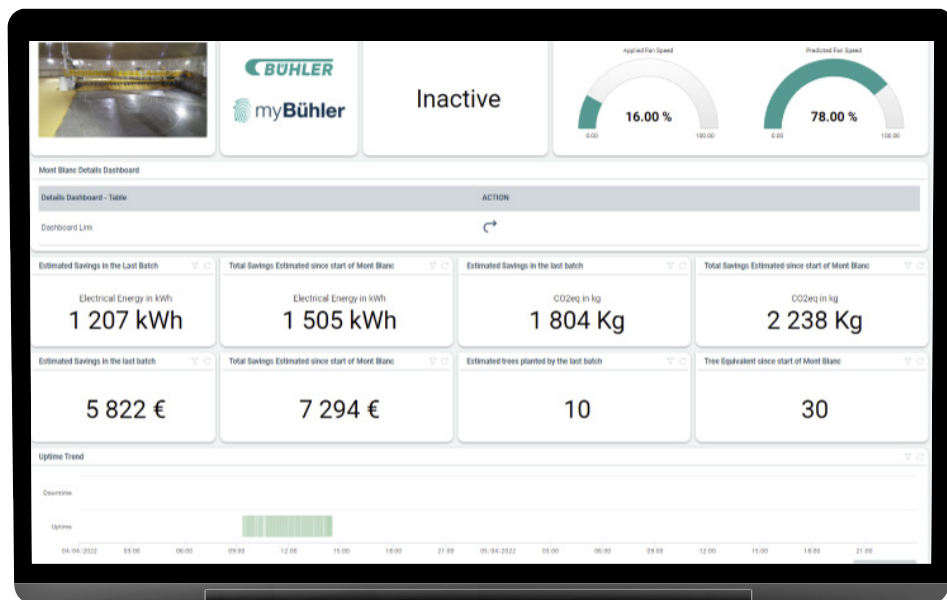
Filter per job, recipe or process step and have the full process history on hand.



Customized dashboard

Get unlimited access to Bühler Insights dashboards and choose from more than 30 different widgets to define your unique way of data visualization.

Choose the data you need, how you'd like to see it and set the user permissions and notifications.



Fully connected

On your dashboard, you have all the crucial information about MontBlanc and your process at a glance.

Anytime, Anywhere.

Bühler GmbH

Grain Quality and Supply
DE-92339 Beilngries
Germany

T +49 8461 701 0
F +49 8461 701 133

grain-quality-supply@buhlergroup.com
www.buhlergroup.com

MontBlanc brochure EN 0922 Z&B 222599